

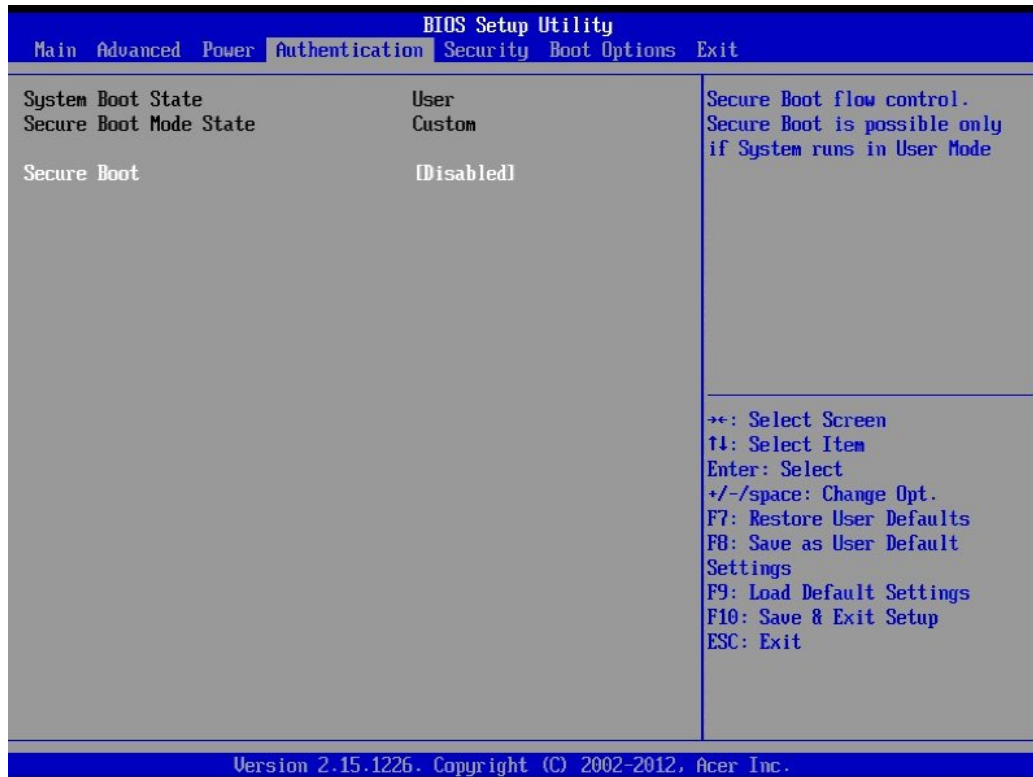
DOS Flash Utility SOP

v1.4

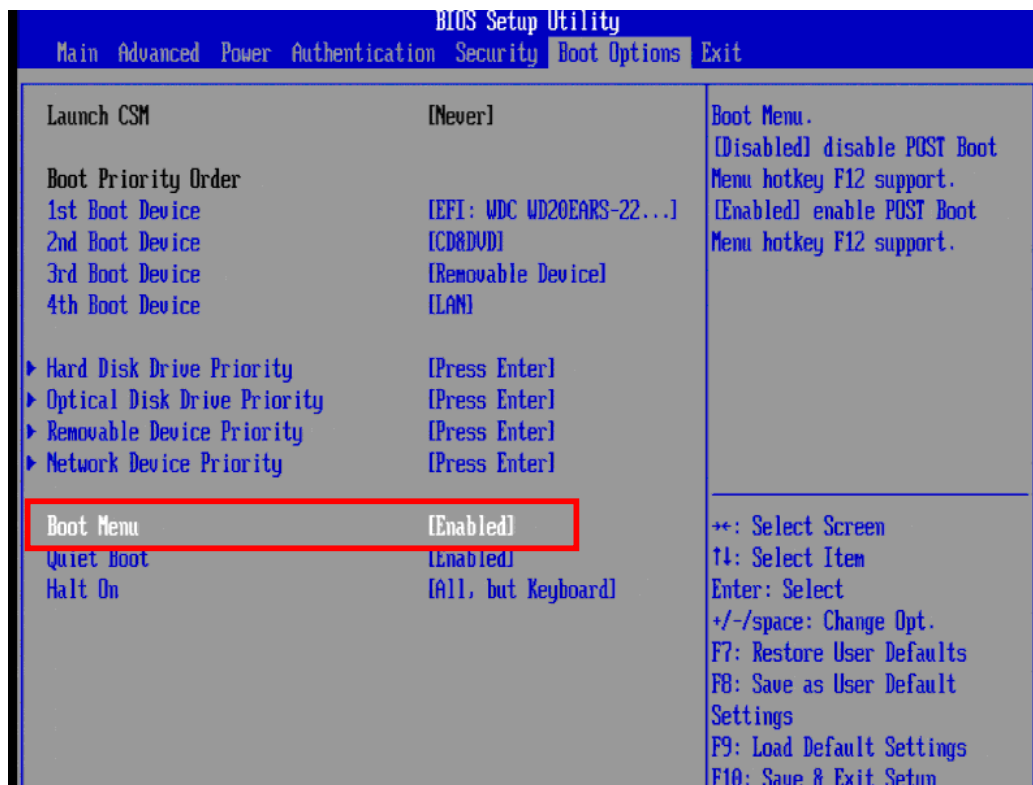
1. Copy BIOS folder to USB storage.
2. Power on system.
3. When you see the LOGO or hear one short beep, please press “Delete” to enter BIOS Setup Utility.
4. Choose “Authentication” page and select “Secure Boot” to disabled.



5. BIOS Setup Utility will disable “Secure Boot”



6. Choose “Boot Options” page and select “Boot Menu” to Enabled.



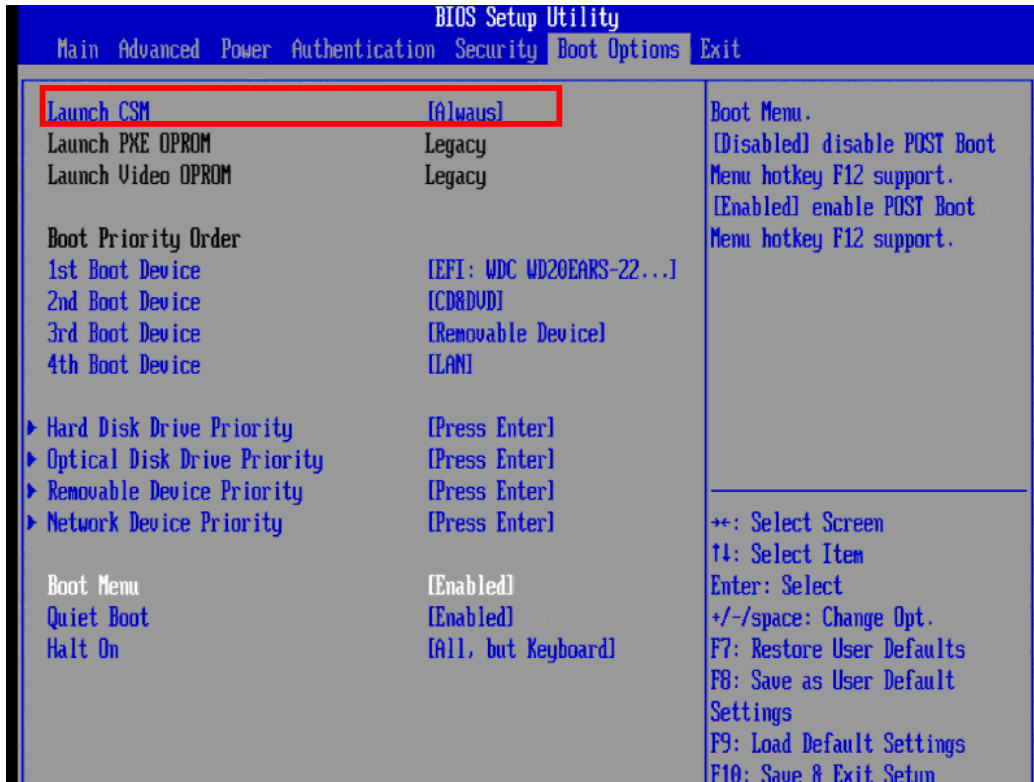
7. Choose “Exit” page and select “Save & Exit Setup” and press “Enter”.

8. Select “Yes” to restart.



9. When you see the LOGO or hear one short beep, please press “Delete” to enter BIOS Setup Utility.

10. Choose “Boot Options” page and select “Launch CSM” to Always.



11. Choose “Exit” page and select “Save & Exit Setup” and press “Enter”.

12. Select “Yes” to restart.

13. Press hot key F12 to enter Boot Menu, and select USB thumbdrive.

14. Enter BIOS folder.

```
C:\>cd P21-A0
C:\P21-A0>
```

15. Enter “DOS” folder.

```
2014/06/09 下午 03:42 <DIR> .
2014/06/09 下午 03:42 <DIR> ..
2014/06/09 下午 03:31 <DIR> DOS
2014/06/09 下午 03:31 <DIR> EFI
2014/06/09 下午 03:31 <DIR> ROM
2014/06/09 下午 03:31 <DIR> WIN
0 個檔案 0 位元組
6 個目錄 159,539,863,552 位元組可用
C:\P21-A0>
```

16. Execute “FLASH.bat”file.

```
2014/06/09 下午 03:31 <DIR> .
2014/06/09 下午 03:31 <DIR> ..
2014/03/11 下午 02:38 155,216 AFUDOS.exe
2014/06/06 下午 04:17 61 FLASH.bat
                2 個檔案 155,277 位元組
                2 個目錄 159,520,284,672 位元組可用
C:\P21-A0\DOS>
```

17. Process to flash BIOS (don’t reset).

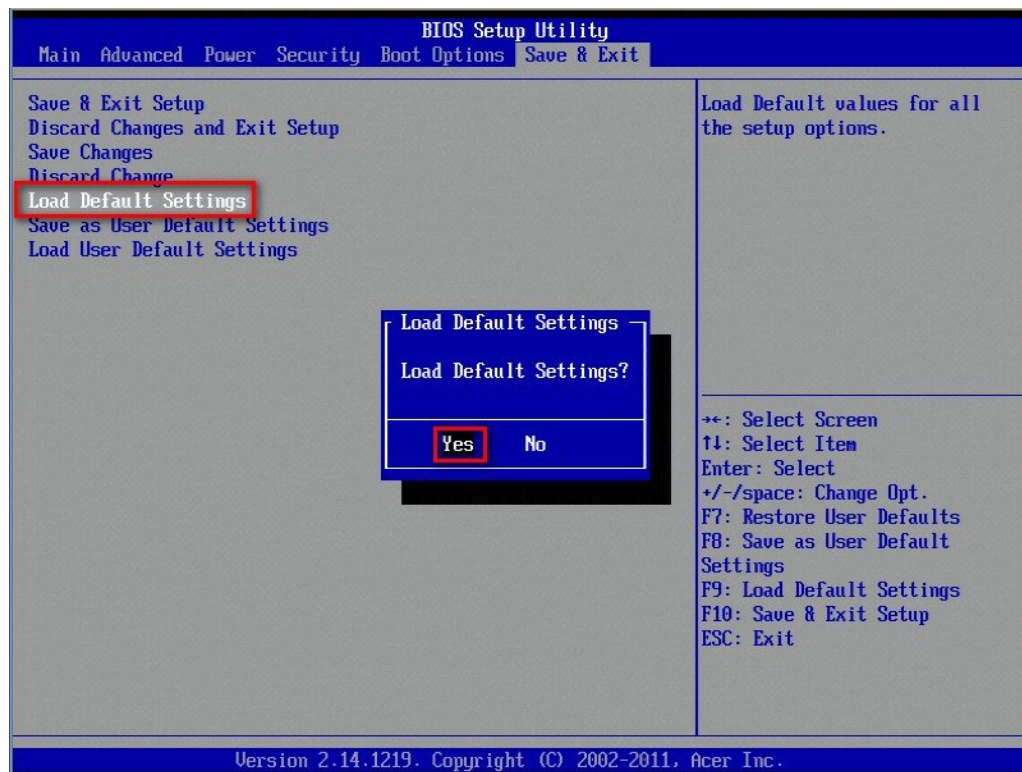
18. Press the power button to shut down the system.

19. Boot system and wait for finishing update BIOS.

20. When you see the LOGO or hear one short beep, please press “Delete” to enter BIOS Setup Menu.

21. Select “Load Default Settings” and press “Enter”.

22. Select “Yes” to load default setting.



23. Select “Save & Exit Setup” and press “Enter”.

24. Select “Yes” to restart.

